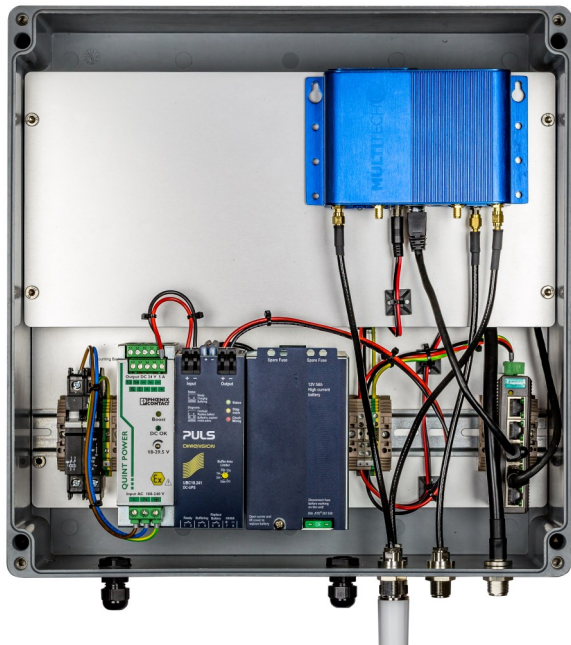


CPN Enclosure M2M MULTITECH-LoRaWan Battery Backup



Multitech layer mounted

The **CPN Enclosure M2M MULTITECH-LoRaWan Battery Backup** includes all the necessary components to feed an internal mounted Hughes 9502 M2M BGAN satellite terminal and a **MULTITECH CONDUIT V1.5 SPI LoRaWan Gateway** with the required power. Running the LoRaWan network via the reliable IP connectivity over the Inmarsat Broadband Global Area Network (BGAN) in rural areas.

The system also includes an industrial power supply and a powerful Batter Backup to protect the system against external power failures. The transmission of the data will be ensured for a limited time, even when the external power source is interrupted at the unmanned site.

The **MULTITECH CONDUIT V1.5 SPI LoRaWan Gateway** installed inside the CPN Enclosure is protected against harsh weather conditions. It is specially designed for unmanned installations with harsh weather conditions (IP 67, wide temperature range) and instable electrical power supply.

The **CPN Enclosure M2M MULTITECH-LoRaWan Battery Backup** is a **ready to install solution**. Simply build up LoRaWan Networks in rural areas for machine-to-machine (**M2M**) and **IoT** applications such as:

- Mining, Oil and gas
- Agriculture
- Environmental monitoring,

The **CPN Enclosure M2M MULTITECH-LoRaWan Battery Backup** is a cost-effective, always-on, real-time, high-speed IoT- System which contains:

- Double circuit Breaker
- Phoenix 120/240V AC/DC 50/60 Hz industrial power supply (QUINT-PS/1AC/24DC/ 5/CO)
- Puls uninterruptible power supply (UPS) (UBC10.241-N1)
- Moxa unmanaged switch (EDS-205A-T)
- IP 67 protected for installations in harsh environments Easy to install

Optional:

- **Dual Loop High Gain Antenna** (gain 10dBI) for LTE Operation, 698-960 and 1710-2700 MHz

Special BGAN M2M Service plans that dramatically lower monthly cost are available.



Multitech layer not mounted

Specifications

Weight:	11 kg / 24.25 lbs (without satellite terminal)
Dimensions:	40,8 x 43,2 x 16,0 cm 16.06 x 17.00 x 6,29 inches

Power

Input Voltage:	120/230 V AC 50/60 Hz
----------------	-----------------------

Environmental conditions

Dust and Water:	IP-67 protection class
Temperature:	-20°C to +50°C charge -4°F to +122°F charge -40°C to +60°C discharge -40°F to + 140°F discharge

Interfaces

5 x 10/100 RJ45 port:	non PoE
-----------------------	---------

About CPN Satellite Services GmbH

Your qualified partner for satellite based solutions

CPN Satellite Services GmbH has been specializing in innovative solutions for mobile satellite communication since 1989. CPN stands out in the industry due to our comprehensive and service oriented offer of services. Our clientele are well known national and international companies.

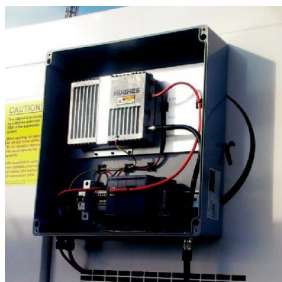
We are one of the pioneers in the market. Our company philosophy is focused on the individual demands of our customers. We offer consultation, realization of projects and trainings as well as first class After Sales Support.

Customer sectors

- Automotive
- Security
- Finance
- Tourism
- Military
- IT & System houses
- Media & Press
- Aid organizations
- Energy
- Medicine
- Logistics and Transportation
- Plant and engine construction
- Research and Development
- Chemistry
- Telecommunication

Range of application

- Condition Monitoring
- SCADA (Supervisory Control and Data Acquisition)
- M2M
- Remote Office
- News gathering
- Backup-/Emergency communication
- Fleet management/Tracking



CPN Satellite Services GmbH
Adalbert-Stifter-Straße 15
65375 Oestrich-Winkel
Germany

phone: +49 (0) 6723 91 348 - 0
fax: +49 (0) 6723 91 348 - 69
email: info@cpn.de
internet: www.cpn.de